

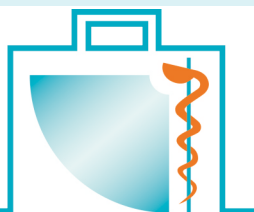
Catalogue 2020

Course packages

Organs, puncture objects and consumables

Accessories, maintenance and services

LET LUEBECK
EUS
TRAINER



Course packages

Organ packages

Puncture objects

Consumables
and accessories

Maintenance
and services

Information and
ordering details

Catalogue

The Luebeck EUS Trainer (LET) is a training device for endosonographically controlled punctures and interventions at the upper and lower gastrointestinal tract. So that the training courses can be thematically focused, different variants of course packages are offered.



Course packages

Course packages contain all organs, puncture objects and consumables necessary for an endosonography course. They are designed for single use. Depending on the focus of your course, you can choose out of four different course packages.

To supplement organs, puncture objects and other consumables can also be ordered separately.

Course package » Basic Course« (with 3 puncture spheres)

KP-Grund

Contains 1 stomach, 1 rectum, 3 urinary bladders, 3 puncture spheres (PO-GK) as well as a sufficient amount of biopsy objects and consumables for a single application on the LET.

Course package » Advanced Course« (with 2 puncture spheres)

KP-Aufbau

Contains 1 stomach, 1 rectum, 6 urinary bladders, 2 puncture spheres (PO-GK) as well as a sufficient amount of biopsy objects and consumables for a single application on the LET.

Course package » Advanced Course« (no puncture spheres)

KP-Aufbau-o

Contains 1 stomach, 1 rectum, 6 urinary bladders as well as a sufficient amount of biopsy objects and consumables for a single application on the LET.

Course package » Combined Course« (with 3 puncture spheres)

KP-Kombi

Contains 1 stomach, 1 rectum, 6 urinary bladders, 3 puncture spheres (PO-GK) as well as a sufficient amount of biopsy objects and consumables for a single application on the LET.

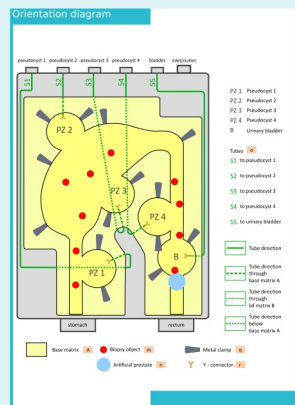
Supplement to the handbook

HB-B

This supplement is part of the delivery scope of the LET. As it can be useful for participants of the course, it is also offered separately. The orientation diagram in A3 format is included.



Supplement to the Handbook



Organ packages

The pig's freshly slaughtered organs are prepared for the training courses and packed into individual packages. The organs are delivered in air- and waterproof-welded plastic bags, deep-frozen in an insulating box. The packing date is indicated on the packs. Information on ordering, delivery and handling can be found on page 14.



Stomach

OP-M

Contains 1 stomach
with esophagus

Rectum

OP-R

Contains 1 rectum

Urinary bladders

OP-H

Contains 6 Urinary
bladders

Puncture objects

Puncture objects are part of the course packages. The course packages contain a sufficient amount of puncture objects for a single application on the LET (including appropriate reserve).

The objects are freshly prepared for each course, packed in plastic jars and marked with packing date. Please note, that puncture objects can be stored for a maximum of 7 days in the closed jars.



Puncture objects according to customer requirements on request

Puncture objects can be produced in different versions, several sizes and colors. If you are interested, we will be happy to provide you with an individual offer.

Puncture objects



Puncture sphere

PO-GK

Contains 1 puncture sphere.

Within the sphere there are 4 spherical, red puncture targets with a diameter of about 2 cm.

It is highly recommended to order complete course packages. These contain a sufficient amount of puncture objects for a single application on the LET. If necessary, additional puncture objects can be ordered.

Puncture spheres are included in the course packages in different quantities. They can also be ordered separately if required.



Artificial prostate

PO-P

Contains 2 artificial prostates.

Diameter approx. 4 cm; red colored throughout.

Included in all course packages by default.



Biopsy objects

PO

Contains 12 biopsy objects.

Diameter approx. 2 cm; red colored throughout.

Included in all course packages by default.

Consumables

It is highly recommended to order complete course packages. These contain all necessary consumables. If necessary, additional consumables can be ordered as a complete package.



Complete package » Consumables«

KP-VM

Contains all consumables for one course. Includes a set of 5 tubes (S1-S5 for pseudocysts), a filling tube for pseudocysts, metal clamps, Y-connectors, crocodile clips and cable ties. The amount of pieces is sufficient for a single application on the LET.

Puncture objects are not included.

Accessories

The accessories are designed for reuse after cleaning. If desired, the necessary tubes and stabilisation pipes can also be ordered separately.



Complete package » Tubes«

KP-S

Contains 1 water inlet tube (S-WZ), 1 water outlet tube (S-WA) and 1 pressure equalisation tube (S-DA) as well as 3 stabilisation pipes (STR, in two different sizes).



Water inlet tube

S-WZ

Total length approx. 1.50 m.



Pressure equalisation tube

S-DA



Water outlet tube

S-WA

Total length approx. 1.50 m.



3 x Stabilisation pipes

STR

Available in two sizes: 2 small ones for longitudinal echoendoscope (can be used on both sides - stomach and rectum) and 1 large one for radial echoendoscope (can be used only rectally).

Info

XX means the component number, analogous to designation in LET handbook.

Accessories

Some accessories can only be delivered on request as they are part of the original LET delivery. If any of the accessories is lost, it can of course be replaced. The exact design may differ from the original accessories.



Plug socket with switch

SD

Cable length: 1.50 m, mains connection: 50 Hz, 230 V, Euro plug.



Water pump

WP

Connection is suitable for the water inlet tube (S-WZ).
Maximum head: 1.40 m, mains connection: 50 Hz, 230 V, Euro plug, cable length: 2 m.



Water tank

WB

Capacity: 20 liters.
Dimensions: 39 cm x 25 cm x 29 cm.



Water collection tray

WS

Dimensions: 92 cm x 52 cm, edge height: 3 cm.



Connection cable for HF surgical equipment

K-HF

Suitable for HF surgical device of Erbe Elektromedizin GmbH (Tübingen, Germany).

Device types: VIO 200 D, VIO 200 S, VIO 300 D and VIO 300 S.

Cable length: 4 m.

Maintenance and services

Even with proper use of the LET, individual parts can wear off or gradually change. They must be replaced from time to time. In particular, valves and sealing rings must be replaced during normal maintenance in order to keep the LET waterproof.

Service - Renewal of all seals

DL-DR

As a service, the renewal of all seals is offered. For this purpose, the LET must be sent in.

9



Connection valve for filling the pseudocyst V-PZ

Quantity: 1; including sealing rings.

10



Connection valve for water inlet / outlet V-WZ

Quantity: 1; including sealing rings.

7



Pressure equalisation valve V-DA

Quantity: 1; including sealing rings.



Set of sealing rings for self-assembly DR

Contains all sealing rings for one complete replacement on a LET case plus thread seal tape.

Tools for self-assembly are necessary (not included in the set).

Matrix

M-V1.3

The matrix can only be supplied as a complete set with base and lid matrix. The currently available matrix corresponds to version number 1.3. It is also compatible with the previous LET device versions 1.1 and 1.2.



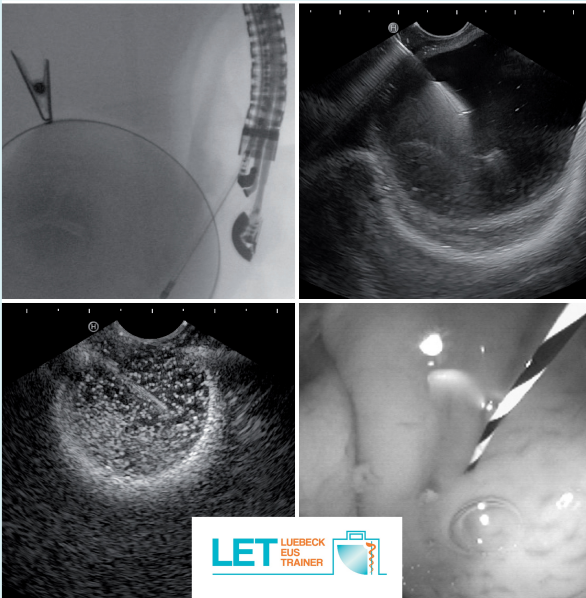
Handbook

HB

The current handbook for the use of the LET can be reordered. Copies of previous device versions can be delivered on request.

HANDBOOK

for use with the
Luebeck EUS Trainer



Information on the organs

Cold chain

The organ packages are packed after preparation and stored deep-frozen. The deep-frozen organs are shipped in insulating boxes, if necessary with ice packs, and only by express delivery. The organs remain frozen for about 14-30 hours from dispatch (depending on weather and delivery conditions).

Upon receipt, the organ packages should be stored at least refrigerated (max. 1-2 days) or should be frozen again. In any case, the organs should remain in their welded original packaging until the day of the course.

When ordering the course packages (including organs), we recommend to indicate the day before the course day as delivery date. In this case an intermediate cooling is usually not necessary.

Use of the organs

The use of the organs is only possible in the thawed state. It is advisable to defrost the frozen organs on the evening before the course day. The organs should remain in the welded, unopened original packaging.

If the organs are still frozen in places at the beginning of the assembly of the LET, it is advisable to rinse the organs with warm water or put them in warm water for a few minutes.

We recommend rinsing the organs with cold water immediately before they are inserted into the LET. This reduces the development of unpleasant odour.

Safety precaution

The delivered organs are animal by-products of categories 2 and 3. They are not suitable as food and must be disposed professionally.

Registration number of the FZ-U

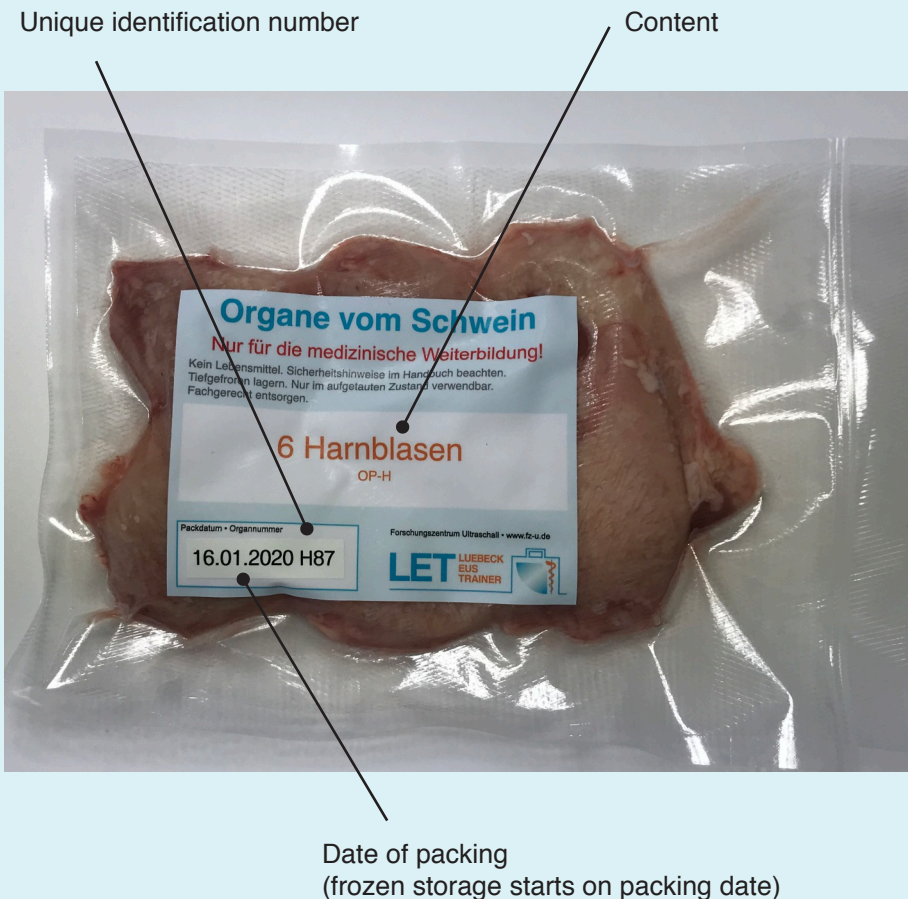
The FZ-U is entitled to handle animal by-products of categories 2 and 3. The registration number is: DE 15 002 0030 21.

Information on the organs

Labeling

All organ packages are labeled. The origin and whereabouts of all organs can be clearly documented via a unique identification number. FZ-U keeps a register of all the produced organ packages.

From the date of packing, recorded on the packaging, the organ packages are stored frozen. The labeling of the organ packages is explained in the following figure.



Ordering details

Ordering

Please use the order form (see downloads).

Order confirmation

Orders, with respect to type and scope, shall only become binding upon our confirmation. Any changes or additions require written form.

Delivery of course packages and organs

Within Germany

Delivery is made by overnight courier at the agreed delivery date. The day before the course day(s) should be chosen as the delivery day.

Outside of Germany

Deliveries outside of Germany must be requested before ordering.

Delivery of accessories and spare parts

Unless otherwise stated, the delivery time is 4 weeks.

Prices

According to the current price list, plus packaging and shipping costs. These will be declared bindingly in the order confirmation.

General terms and conditions

The general terms and conditions of Forschungszentrum Ultraschall apply.

Available on:

www.fz-u.de

Downloads

The order form and the current catalogue can be found on:

www.luebeck-eus-trainer.com

Status of the catalogue: June 1, 2020

Changes and deviations from the products shown here are reserved.



Forschungszentrum Ultraschall

Contact information

Forschungszentrum Ultraschall
Köthener Straße 33a
06118 Halle
Germany

Contact person of LET

Sabine Kern
LET@fz-u.de
Fax: +49 (0) 345 44 58 39 -19



Forschungszentrum
Ultraschall

www.fz-u.de

www.luebeck-eus-trainer.com

LET LUEBECK
EUS
TRAINER

